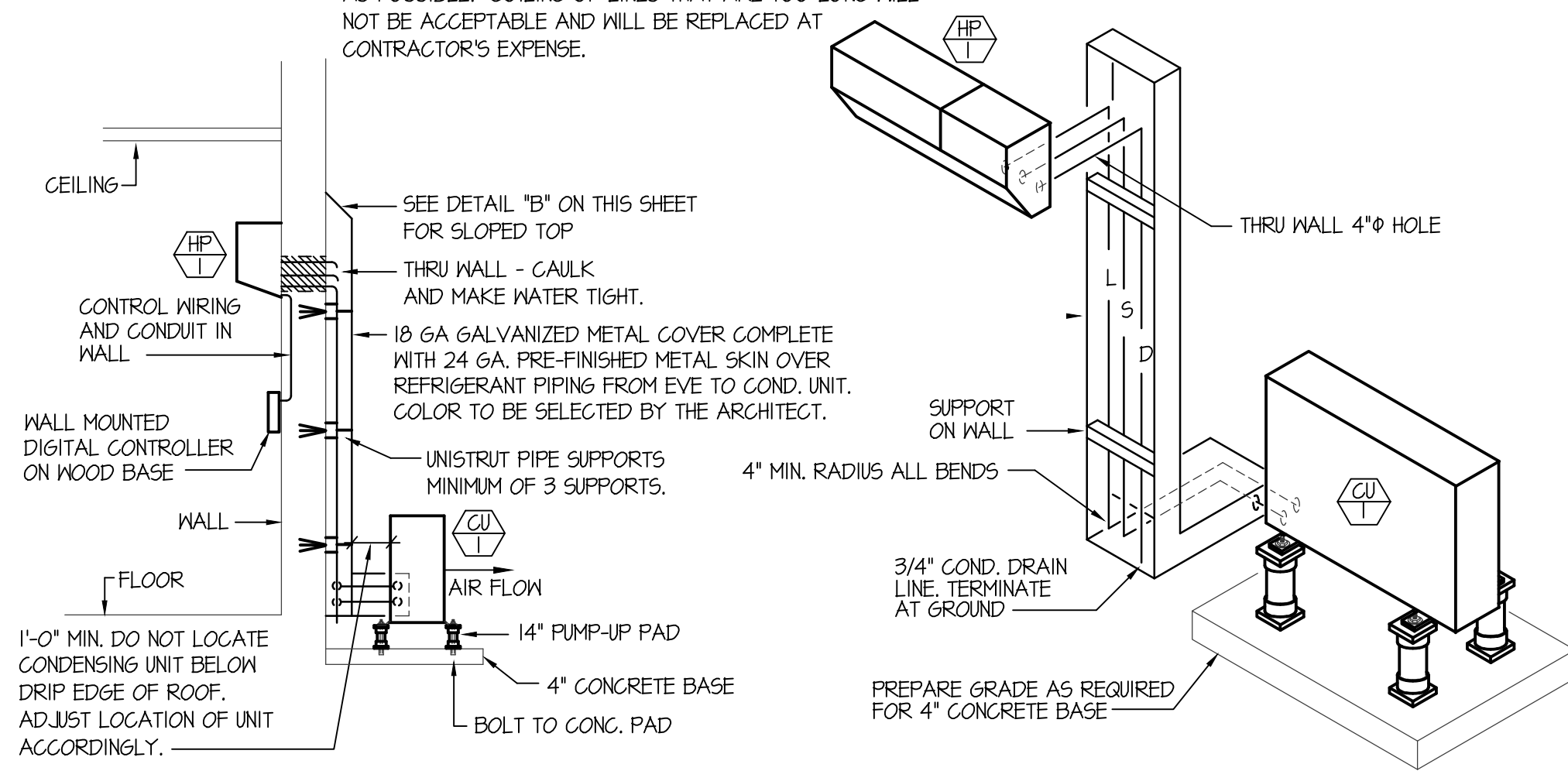


NOTE: PRE-CHARGED LINES SETS ARE AVAILABLE IN LENGTHS OF 16, 20, 32 & 44 FEET. LENGTHS ARE TO BE KEPT AS SHORT AS POSSIBLE. COILING OF LINES THAT ARE TOO LONG WILL NOT BE ACCEPTABLE AND WILL BE REPLACED AT CONTRACTOR'S EXPENSE.



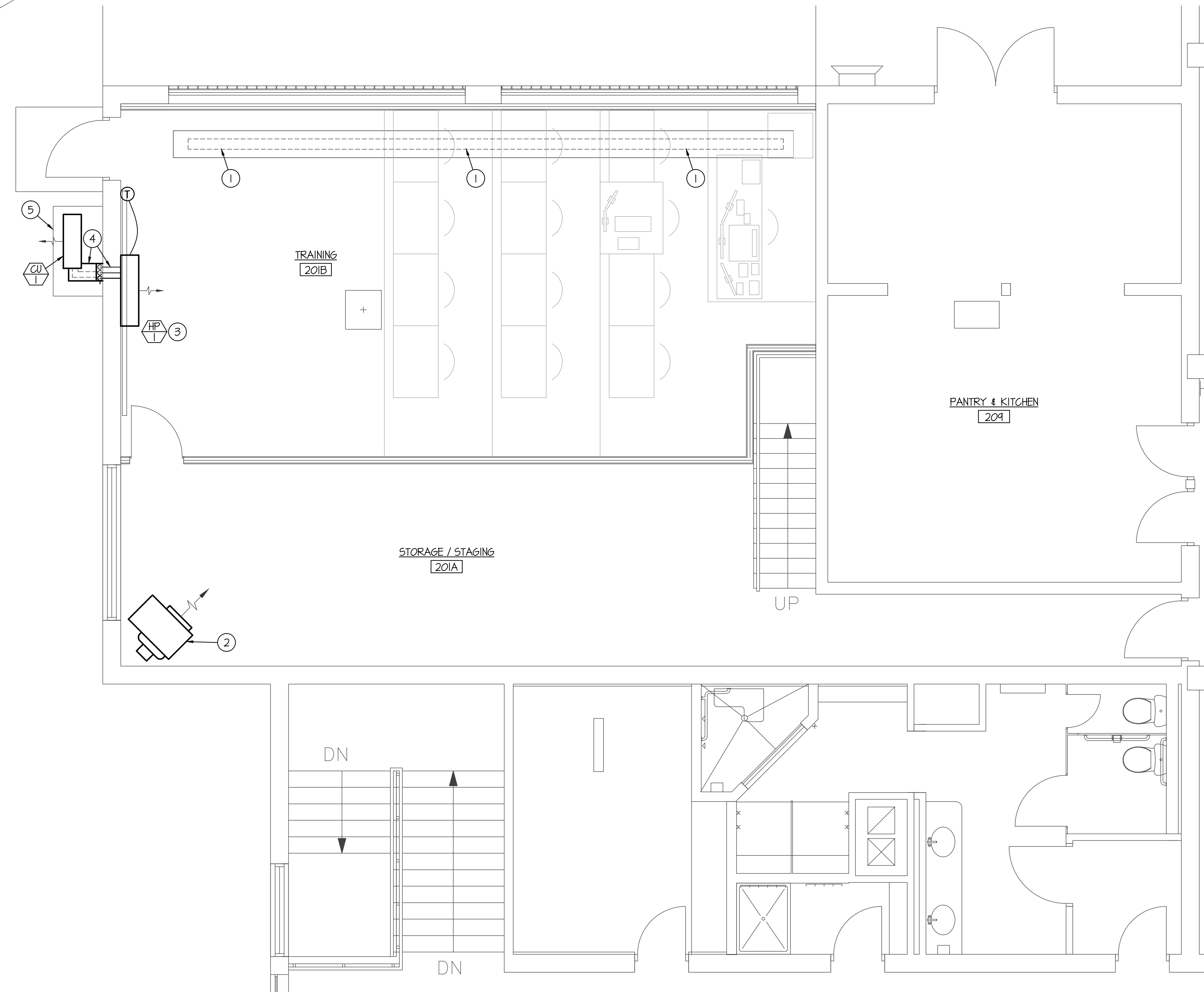
A HEAT PUMP & REFRIGERANT PIPING DETAIL
MP-1 NO SCALE

HEAT PUMP UNIT SCHEDULE (ELECTRIC)																
SYM.	TYPE	BLOWER SECTION			HEATING			DX COOLING COIL			PIPING SIZES			CHAR	AMPS	REMARKS
		CFM	SP. IN/WT	WATT	MBH	EAT	LAT	MBH	EAT	LAT	LIQ	SUCT.	CD			
HP-1	WALL MOUNTED	420	NA	56	37.0	65°F	45°F	34.6	80°F	55°F	3/8"	5/8"	3/4"	208/60/1	1.2	MITSUBISHI PKA-A36KAL) WALL MOUNTED UNIT WITH CONTROLLER

CONDENSING UNIT SCHEDULE						
SYM.	BTU	EAT	CHAR.	MCA	WEIGHT	REMARKS
CU-1	36,000	45°F	208/650/1	25.0	165#	MITSUBISHI PUZ-A36NH3 WITH O/P LOW AMBIENT KIT

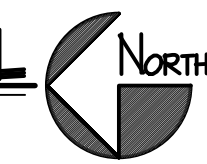
PLAN NOTES:

- REMOVE EXISTING TRENCH DRAIN AND CAP WASTE, AND VENT PIPING BELOW FLOOR LEVEL. SEE ARCHITECT'S PLANS FOR PATCHING OF CONCRETE SLAB.
- EXISTING GAS FIRED UNIT HEATER AND CONTROLS TO REMAIN. PROTECT DURING CONSTRUCTION.
- INSTALL WALL MOUNTED HEAT PUMP AT 10'-0" A.F.F TO TOP OF UNIT. CENTER UNIT ON NORTH WALL OF NEW TRAINING ROOM. CAREFULLY COORDINATE FINAL LOCATION WITH OTHER TRADES.
- RUN REFRIGERANT PIPING, CONTROL CONDUIT, ELEC, AND CONDENSATE DRAIN PIPING THRU WALL FROM WALL MOUNTED UNIT AND DOWN EXPOSED ON EXTERIOR WALL AS SHOWN. COVER EXPOSED PIPING AND CONDUIT WITH 18 GA. GALVANIZED SHEET METAL COMPLETE WITH 24 GA. PREFINISHED METAL COVER TO MATCH BUILDING COLOR (COLOR TO BE SELECTED BY THE ARCHITECT). SEE DETAILS ON THIS SHEET.
- INSTALL CONDENSING UNIT ON 4" THICK CONCRETE PAD IN LOCATION SHOWN. CONCRETE PAD BY GENERAL CONTRACTOR.



B REFRIGERANT PIPING SUPPORT AT WALL
MP-1 NO SCALE

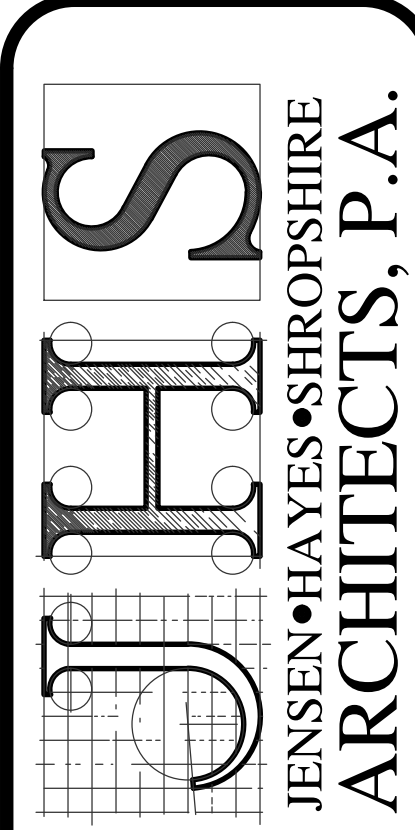
ENLARGED FLOOR PLAN - MECHANICAL
SCALE: 1/4" = 1'-0"



REFER TO ARCHITECTS DWG. SHEET A2.1 FOR ORIENTATION / LOCATION OF TRAINING AND STAGING AREAS.

COPYRIGHT 2019
JENSEN HAYES SHROPSHIRE
ARCHITECTS, P.A.

125 NORTH GARFIELD
POCATELLO, IDAHO 83204
(208) 232-1223



NATIONAL GUARD ARMORY
POCATELLO, IDAHO
MECHANICAL FLOOR PLAN

Professional Engineer Registered in the State of Idaho
David C. Sudweeks
Engineered Systems Associates
1355 EAST CENTER
POCATELLO, IDAHO 83201
PHONE: (208) 233-0501
FAX: (208) 233-0529
EMAIL: eso@engsystems.com
ESA JOB NUMBER: 19003

REVISIONS:
DATE: JUNE 2019
DRAWING NO. MP-1
JOB NO. -
OF -